

ELECTRONIC LOCKING SYSTEM (ELS) SYSTEM DESCRIPTION



Improves your service & facility management

Use electronically controlled lockers for ski resorts, hotels, universities, factories, hospitals, etc.

Can be used with storage lockers for sport, work & personal belongings.

Existing RFID cards can be used as a Locker Keys.

Alarm in case of locker break-in.

Other Metra devices can be easily integrated into the system.

FIELDS OF APPLICATION

Metra ELS is a simple for locking / unlocking the lockers with RFID (Radio Frequency Identification) media, PIN code or a fingerprint (optional), with the possibility of paying for locker usage. Various combinations are possible, depending on the hardware. It is used wherever there is a need for electronic locking. It has been built in in several pools, sports halls, SPA, fitness and wellness facilities, schools and colleges, offices, factories, etc.

RFID media is usually in the form of cards or bracelets or also be in the form of different pendants, watches, etc.. The system is open, meaning that we can use existing cards for access control, or "Loyalty" cards to lock the locker. The system can be upgraded with Metra access control devices or. Metra access control system.

User interface

Display serves as user interface. Different versions are available for different applications.



Display Keypad: 4 digit LED display with built in keypad to enter PIN code.



Display RFID: 4 digit LED display with built in RFID reader.

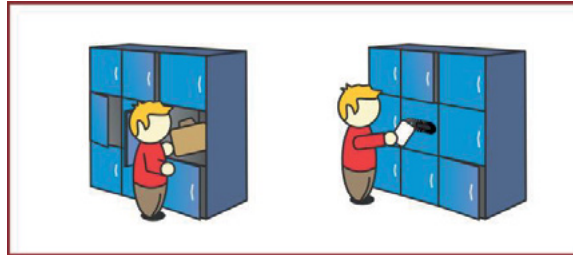


Display Combo: 4 digit LED display and a combination of keypad to enter PIN code and RFID reader.

Additional modules:

- Deposit pad helps us prevent unwanted locking of more lockers from one person. The locker can be closed only if the user inserts a coin into the deposit pad. The coin serves as deposit for the locker as long as it stays closed and locked.
- The fingerprint sensor can be used as alternative to RFID medium or PIN code.
- Coin acceptor can be used when we want to charge for the locker usage. The locking validity can be set in the parameters of the device.

HOW THE ELS SYSTEM OPERATES



Locking the locker

The user selects any free (open) locker. He closes the chosen locker door, and while the countdown is flashing on the display he:

- a) enters a chosen PIN code. It can have (depending from the set-up) from one to four digits. He confirms the locking by pushing enter.
- b) approaches the RFID medium to the reader.
- c) lays his finger on the fingerprint sensor.

On the display the locker number is shown, signaling a successful locking operation.

Unlocking the locker

- a) The user enter his locker number and confirms it by pushing enter on the display. While sign PIN is flashing on the display he enters the chosen PIN code, than the locker opens.
- b) He approaches the RFID media to the reader. When the medium is recognised as valid the locker door opens.
- c) He lays his finger on the fingerprint sensor. When the fingerprint is recognised as valid, the locker door opens.

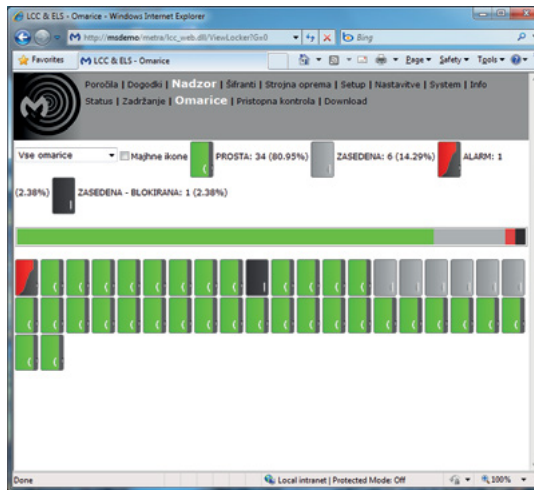
Security features:

- Master keys (PIN code or RFID media) for system administrators. Master keys allow opening of any locker or group of lockers.
- Pushbutton for emergency opening all, to particular device, connected lockers is integrated on the Locker Controller.
- Remote opening of any locker from PC workstation (just with Metra software).
- Alarm in case of locker brake-in.

METRA SOFTWARE (OPTIONAL)

By using Metra ELS software we gain following functionalities:

- Locker occupancy monitoring from any computer connected into LAN network and equipped with Metra software.
- Management of »master« and »setup« keys through Metra software.
- Faster and easier setting of parameters for devices.
- The possibility of remote unlocking through software.
- The possibility of unlocking all lockers at a pre-set time.
- Alarm in case of brake-in.



»Metra ELS White Check List« can be included into the system, it enables us to lock the lockers with RFID media that have been previously entered into the data base. By doing this we prevent the usage of other RFID media that the guests could have brought inside the facility.

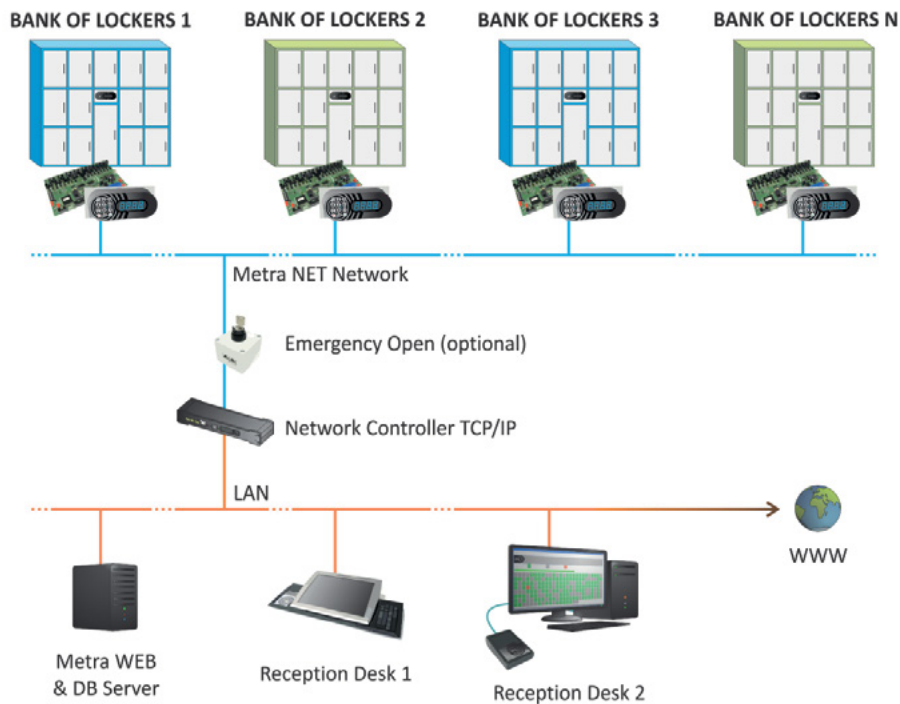


ELS NET ACTIVE X (XML) SOFTWARE INTERFACE

Integration of Metra ELS NET system into existing 3rd party software (e.g. hotel software) can be done through Metra Active-X software library or via XML interface.

ELS SYSTEM COMPONENTS

- Electronic lock
- Locker controller
- Display RFID/Keypad/Combo
- Network controller NET or Network controller TCP/IP
- Desktop POS reader
- Metra ELS and Metra POS software (optional)



For more detail components descriptions please see our web site (www.metra.si) or contact our sales department. See also ELS Product Catalogue.