

ELS NET RFID

SYSTEM DESCRIPTION



Improves your service & facility management.

Use electronically controlled lockers for ski resorts, hotels, universities, factories, hospitals, etc.

Can be used with storage lockers for sport, work & personal belongings.

Existing RFID cards can be used as a Locker Keys.

Complete solution for renting lockers with Metra POS software.

Alarm in case of locker break-in.

HTTP access (over TCP/IP) for locker reservations.

Easy integration into third party software.

Other Metra devices can be easily integrated into the system.

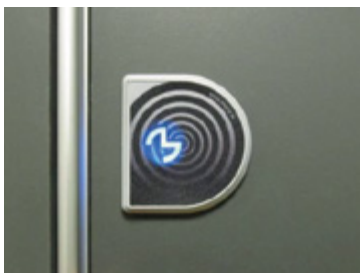
FIELDS OF APPLICATION

Metra ELS NET system is an electronic locking system for Lockers where RFID (Radio Frequency Identification) media is used as a locker key. The system can be used in:

- **SKI RESORTS** for ski renting lockers. Guests can rent lockers for certain period of time so they don't have to carry their ski equipment from the hotel to the ski slope every time. They can use the existing ski passes as a locker keys which means there is less possibility to forget it. The RFID media's validity is defined with ELS NET software which also enables billing and full locker management (reservations, reports, locker status, etc.).
- **SCHOOLS AND UNIVERSITIES**, where student's RFID media is usually defined for one study year. Existing student cards can be used with the system.
- **FACTORIES AND PLANTS**, where employee's RFID media is defined for a longer period of time and used in changing rooms or/and for access to tools storage lockers.
- **HOSPITALS** for changing rooms as well as for storing drugs and other medical equipment where employees have limited access to.
- **HOTELS**, so the hotel guests can use lockers for storing sport equipment. The same RFID media can be used for lockers and for hotel rooms. RFID media is usually issued for the time of guests stay.
- **POST BOXES**, where nowadays we often have a problem to catch working hours of public companies. No matter of which hour you can get to your (official) mail. All data about locking and unlocking is stored in database on server and can be used as an electronic signature of excepted mail.

For all above mentioned applications Door Access Terminal can be added into the system to allow selective access to lockers area.

Most common RFID media is in a shape of a card, but may be also in form of tag, wristband, watch, etc. System is open, meaning that the existing access control cards, loyalty cards and other RFID media can be used as locker keys.



User interface

Each locker has its own reader and a signalization light that serves as a user interface.

HOW THE ELS NET SYSTEM OPERATES

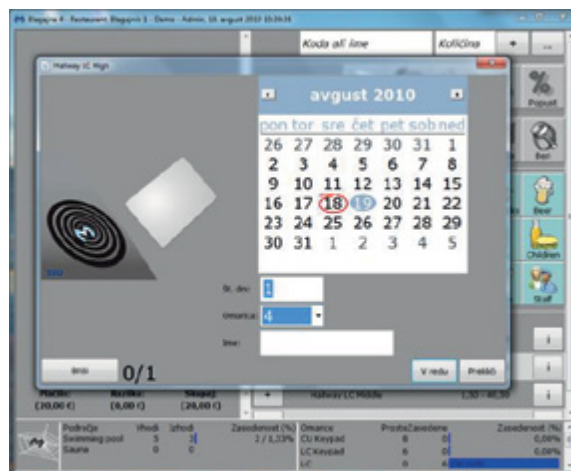


- User reserves (gets) the Locker at the POS PC workstation. Metra Desktop POS Reader is connected to that workstation to read the RFID media and assign it as a locker key. The user reserves specific locker for the period of time defined in the Metra POS software.
- Metra POS software usually runs on the DB server as a WEB application to allow HTTP access from POS workstations. It also controls operation of the Metra devices as a service.
- Lockers are normally closed and locked. They are controlled by the Electronic Lock Controller RFID (up to 16 electronic locks can be connected to a single Controller).
- To open the locker user presents his/hers RFID media (locker key) to the Electronic Lock RFID. If the presented RFID media is recognized as a locker key locker unlocks and opens.
- Locker is automatically locked back just by closing the locker door.

Security features:

- Master keys that allow opening of any locker or group of lockers can be defined in the Metra ELS NET software.
- Pushbutton for emergency opening all, to particular device, connected lockers is integrated on the Electronic Lock Controller RFID.
- Remote opening of any locker from PC workstation.
- Alarm in case of locker brake-in.

METRA POS SOFTWARE



For locker reservation a PC workstation with Metra Desktop Reader connected to it and Metra POS software installed is needed. Metra software runs on a server as a WEB application and it is accessible via WEB browser (HTTP protocol) from the PC workstations. With Metra POS software we assign one or more RFID media to a specific locker as an electronic key (locker number and time validity of the key).

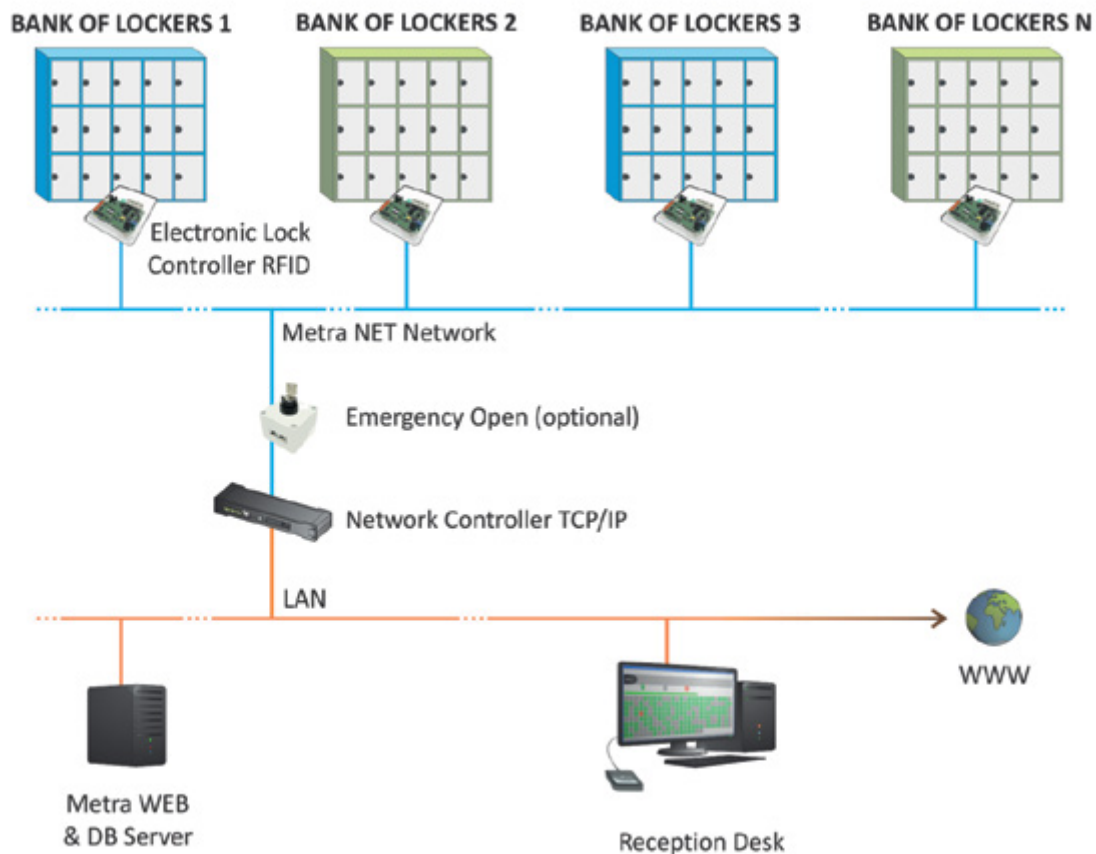
POS software enables full locker management such as key (ticket) definition, provides on-line locker status and report management, selling and billing of lockers, lockers reservation. Software also supports extra components, for example Door Access Terminal which is used in case where location needs access control supervision.

ELS NET ACTIVE-X (XML) SOFTWARE INTERFACE

Integration of Metra ELS NET system into existing 3rd party software (e.g. ski equipment rental software) can be done through Metra Active-X software library or via XML interface.

ELS NET SYSTEM COMPONENTS

- Electronic Lock RFID
- Electronic Lock Controller RFID
- Network Controller NET or Network Controller TCP/IP
- Reader Terminal
- Desktop POS Reader
- Metra ELS NET and Metra POS software
- Door Access Terminal (optional)



For more detail components descriptions please see our web site (www.metra.si) or contact our sales department.